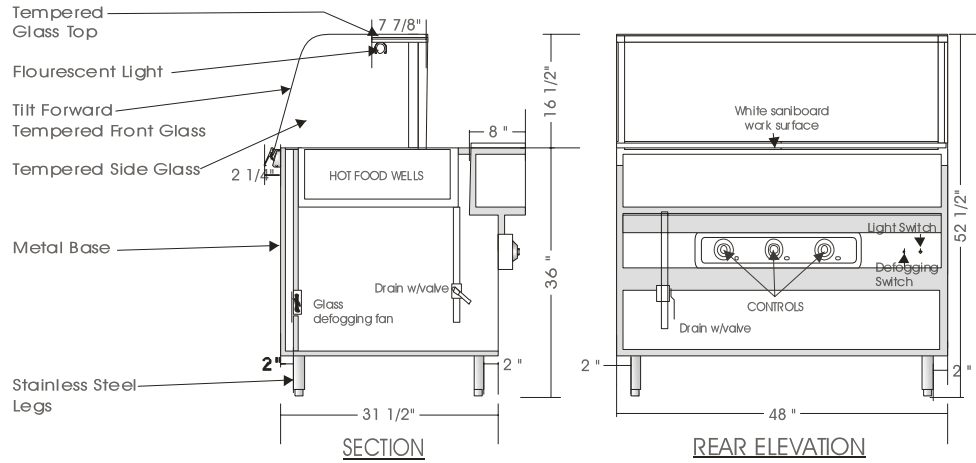


Cafeteria

HOT FOOD TABLE – ESHU

MODELS: ESHU 5236, ESHU 5248, ESHU 5260, ESHU 5276, ESHU 5296



SPECIFICATIONS

	DIMENSIONS	WELLS	ELECTRICAL WELLS	ELECTRICAL LIGHT	SHIPPING WT.
ESHU 5236	36"L.X34"D.X52 1/2"H.	2	208V/1/60HZ/11.9 AMP	115V/1/60HZ/1.0 AMP	400 lb.
ESHU 5248	48"L.X34"D.X52 1/2"H.	3	208V/1/60HZ/17.9 AMP	115V/1/60HZ/1.0 AMP	460 lb.
ESHU 5260	60"L.X34"D.X52 1/2"H.	4	208V/1/60HZ/23.8 AMP	115V/1/60HZ/1.0 AMP	525 lb.
ESHU 5276	76"L.X34"D.X52 1/2"H.	5	208V/1/60HZ/29.8 AMP	115V/1/60HZ/1.5 AMP	650 lb.
ESHU 5296	96"L.X34"D.X52 1/2"H.	6	208V/1/60HZ/35.8 AMP	115V/1/60HZ/2.0 AMP	890 lb.

STANDARD FEATURES

1. Top light.
2. White sani cutting board surface.
3. Painted exterior finish.
4. Stainless steel top and rear panels.
5. All metal construction.
6. Tempered curved front glass (Sneeze-guard), tilt forward and removable.
7. Clear satin anodized aluminum hinge and framework.
8. Hot food wells thermostatically individually controlled.

OPTIONS

1. Powder coated or colour anodized hinge and framework.
2. Stainless steel front and sides.
3. Overhead heater w/light.

*Due to constant improvements, specifications are subject to change without notice.



Canadian Display Systems Inc.

177 West Creek Drive, Woodbridge, Ontario L4L 9N6
 Ph: 905-265-7888, 1-800-895-5862 Fax: 905-265-7692
 email cds1@on.aibn.com

www.canadiandisplayssystems.com