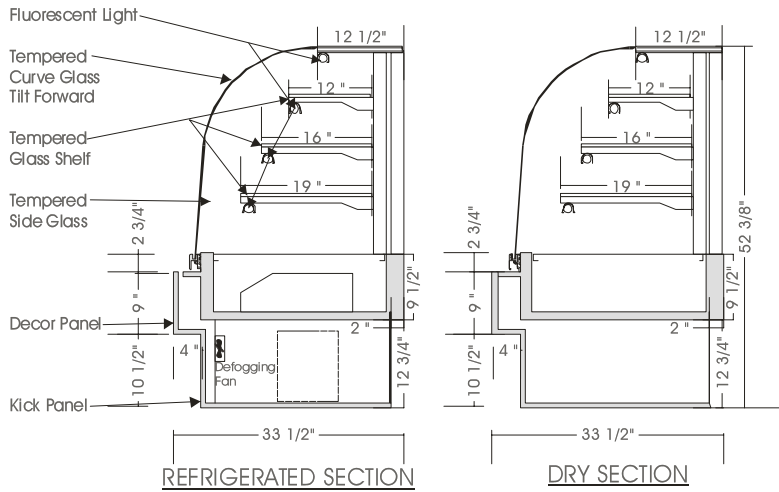


Concept

REF./ DRY DUAL CASE – GLASS ENDS – PRDG

MODELS: PRDG 5258, PRDG 5276



SPECIFICATIONS

MODEL	DIMENSIONS	COMPRESSOR	ELECTRICAL	SHIPPING WT.
PRDG 5258	58"L.X33½"D.X52¾"H.	⅓ H.P.	115V/1/60 HZ/ 9.0 AMP	610 lbs.
PRDG 5276	76"L.X33½"D.X52¾"H.	⅓ H.P.	115V/1/60 HZ/10.0 AMP	740 lbs

STANDARD FEATURES

1. Top light and shelf lights.
2. Tempered curved front glass, tilt forward & removable.
3. White epoxy coated wire shelves.
4. Front glass defogging system.
5. Clear satin anodized aluminum hinge and framework.
6. Exterior & interior laminate finish: Black.
7. Self contained compressor w/hot gas condensate evaporator pan.

OPTIONS

1. Plastic laminate exterior finish of your choice.
2. Powder coated or colour anodized hinge.
3. Custom units on request.
4. Remote condensing unit.
5. Mirrored sliding doors.
6. Tempered glass shelves.
7. Laminate covered side gables.

Operating temperature of 2° to 4° Celsius (37° to 40°F.) under normal store conditions of 24° Celsius (75°F.) with 50% relative humidity.

Condensation may occur under hot & humid conditions.

Product entering the display case must be 4° Celsius (40°F.) or lower.

*Due to constant improvements, specifications are subject to change without notice.



Canadian Display Systems Inc.

177 Westcreek Drive, Woodbridge, Ontario L4L 9N6
Ph: 905-265-7888, 1-800-895-5862 Fax: 905-265-7692

email cds1@on.aibn.com

www.canadiandisplayssystems.com