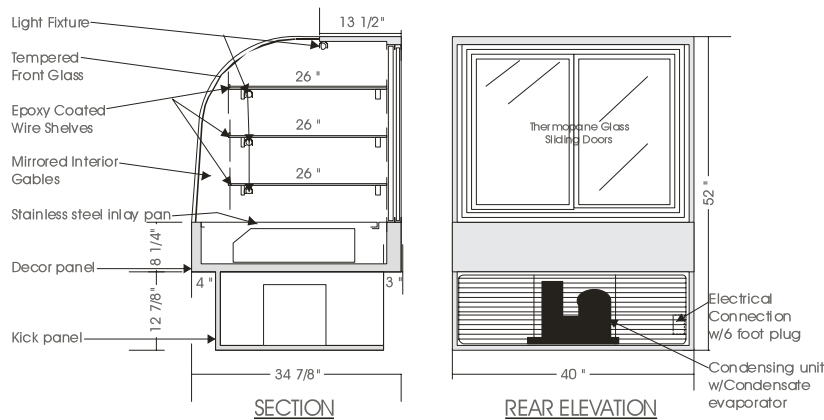


# Concept

## REF. HIGH VOLUME MERCHANDISER – PRM

MODELS: PRM 5240, PRM 5260, PRM 5278



### SPECIFICATIONS

MODEL	DIMENSIONS	COMPRESSOR	ELECTRICAL	SHIP WT.
PRM 5240	40"L.X34 <sup>7</sup> / <sub>8</sub> "D.X52"H.	1/3 H.P.	115V/1/60HZ/9.0 AMP	420 lb.
PRM 5260	60"L.X34 <sup>7</sup> / <sub>8</sub> "D.X52"H.	1/3 H.P.	115V/1/60HZ/10.0 AMP	570 lb.
PRM 5278	78"L.X34 <sup>7</sup> / <sub>8</sub> "D.X52"H.	1/2 H.P.	115V/1/60HZ/12.0 AMP	760 lb.

#### STANDARD FEATURES

1. Top light.
2. Shelf lights.
3. Fixed tempered curved front glass – thermo pane.
4. Solid sides w/mirrored interior gables.
5. Exterior & interior laminate finish: Black.
6. Self contained air cooled compressor w/hot gas condensate evaporator.

#### OPTIONS

1. Plastic laminate exterior finish of choice.
2. Custom units upon request.
3. Tempered glass shelves.
4. Remote condensing unit.
5. Mirrored sliding doors.
6. Tempered side glass.

Operating temperature of 2° to 4° Celsius (37° to 40°F.) under normal store conditions of 24° Celsius (75°F.) with 50% relative humidity. Condensation on glass may occur under hot & humid conditions. Product entering the display case must be 4° Celsius (40°F.) or lower.

\*Due to constant improvements, specifications are subject to change without notice.



## Canadian Display Systems Inc.

177 Westcreek Drive, Woodbridge, Ontario L4L 9N6  
Ph: 905-265-7888, 1-800-895-5862 Fax: 905-265-7692

email [cds1@on.aibn.com](mailto:cds1@on.aibn.com)  
[www.canadiandisplayystems.com](http://www.canadiandisplayystems.com)