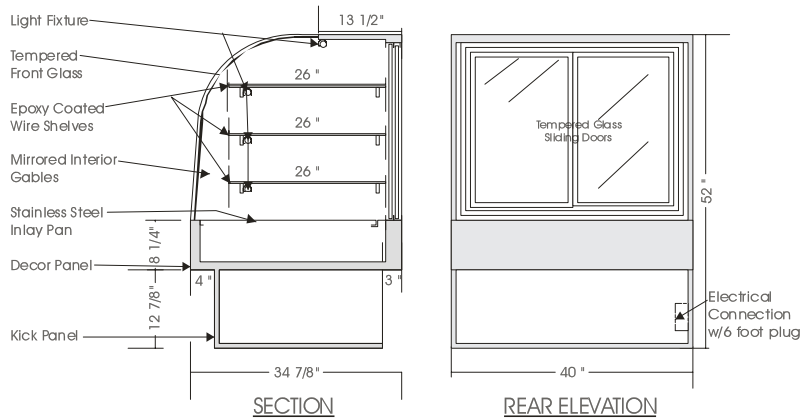


Concept

DRY HIGH VOLUME MERCHANDISER – PDM

MODELS: PDM 5240, PDM 5260, PDM 5278



SPECIFICATIONS

MODEL	DIMENSIONS	ELECTRICAL	SHIP WT.
PDM 5240	40"L.X34 $\frac{7}{8}$ "D.X52"H.	115V/1/60HZ/1.5 AMP	300 lb.
PDM 5260	60"L.X34 $\frac{7}{8}$ "D.X52"H.	115V/1/60HZ/2.5 AMP	420 lb.
PDM 5278	78"L.X34 $\frac{7}{8}$ "D.X52"H.	115V/1/60HZ/3.0 AMP	520 lb.

STANDARD FEATURES

1. Top light.
2. Shelf lights.
3. Fixed tempered curved front glass.
4. Solid sides w/mirrored interior gables.
5. Exterior & interior laminate finish: Black.

OPTIONS

1. Plastic laminate exterior finish of choice.
2. Custom units on request.
3. Tempered glass shelves.
4. Mirrored sliding doors.
5. Tempered side glass.

*Due to constant improvements, specifications are subject to change without notice.



Canadian Display Systems Inc.

177 Westcreek Drive, Woodbridge, Ontario L4L 9N6
 Ph: 905-265-7888, 1-800-895-5862 Fax: 905-265-7692
 email cds1@on.aibn.com
www.canadiandisplayssystems.com