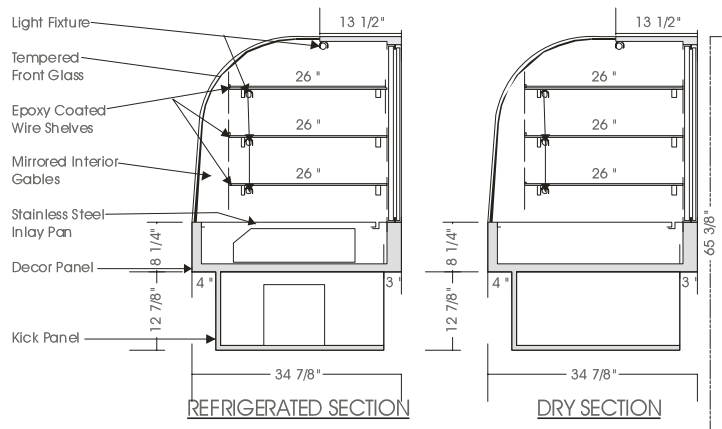


Concept

DUAL REF./DRY H.V. MERCHANDISER – PRDM

MODELS: PRDM 5260, PRDM 5278



SPECIFICATIONS

MODEL	DIMENSIONS	COMPRESSOR	ELECTRICAL	SHIP WT.
PRDM 5260	60"L.X34 7/8"D.X52"H.	1/3 H.P.	115V/1/60HZ/10.0 AMP	570 lb.
PRDM 5278	78"L.X34 7/8"D.X52"H.	1/2 H.P.	115V/1/60HZ/12.0 AMP	740 lb.

STANDARD FEATURES

1. Top light.
2. Shelf lights.
3. Fixed tempered curved front glass – thermo pane.
4. Solid sides w/mirrored interior gables.
5. Exterior & interior laminate finish: Black.
6. Self contained air cooled compressor w/hot gas condensate evaporator.

OPTIONS

1. Plastic laminate exterior finish of choice.
2. Custom units on request.
3. Tempered glass shelves.
4. Remote condensing unit.
5. Mirrored sliding doors.

Operating temperature of 2° to 4° Celsius (37° to 40°F.) under normal store conditions of 24° Celsius (75°F.) with 50% relative humidity. Condensation may occur under hot & humid conditions.

Product entering the display case must be 4° Celsius (40°F.) or lower.

*Due to constant improvements, specifications are subject to change without notice.



Canadian Display Systems Inc.

177 Westcreek Drive, Woodbridge, Ontario L4L 9N6
Ph: 905-265-7888, 1-800-895-5862 Fax: 905-265-7692
email [cgs1@on.aibn.com](mailto:cds1@on.aibn.com)
www.canadiandisplayssystems.com