

PROJECT:

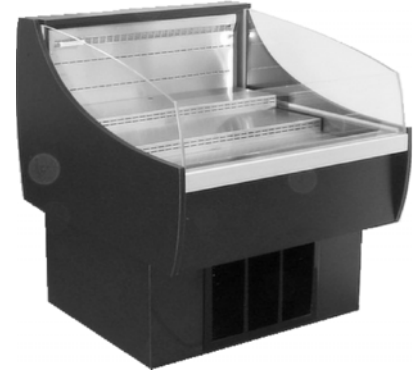
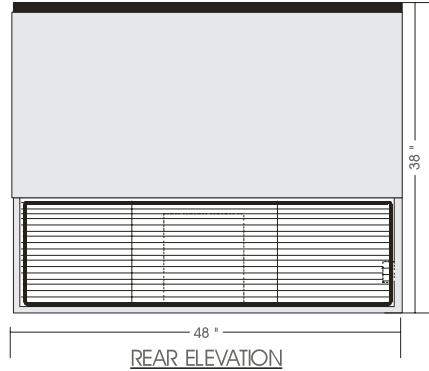
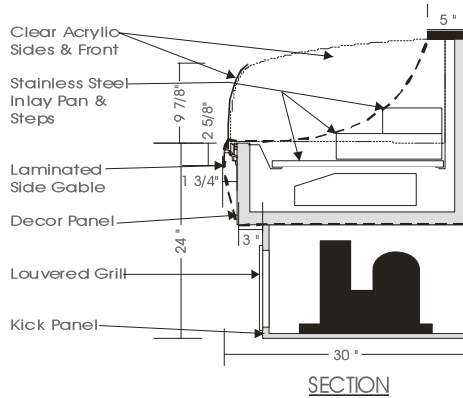
QUANTITY:

ITEM: NO:

Grab And Go

SELF SERVE REFRIGERATED MERCHANDISER – RSS 38

MODELS: RSS 3836, RSS 3848, RSS 3860, RSS 3872



SPECIFICATIONS

MODEL	DIMENSIONS	UNIT	ELECTRICAL		SHIPPING
			COND. UNIT	EVAPORATOR PAN (OPT.)	
		H.P.			WT.
RSS 3836	36"L.X30"D.X38"H.	1/2	115V/1/60 HZ/13.5 AMP.	115V/1/60 HZ/8.3 AMP.	380 lb.
RSS 3848	48"L.X30"D.X38"H.	1/2	115V/1/60 HZ/14.5 AMP.	115V/1/60 HZ/8.3 AMP.	490 lb.
RSS 3860	60"L.X30"D.X38"H.	3/4	230V/1/60 HZ/ 8.0 AMP.	115V/1/60 HZ/8.3 AMP.	580 lb.
RSS 3872	72"L.X30"D.X38"H.	3/4	230V/1/60 HZ/ 9.4 AMP.	115V/1/60 HZ/8.3 AMP.	620 lb.

Connection to Condensing unit, Evaporator pan (Optional)

Floor drain highly recommended for these units. Add 3/4" for each side for end gables. Front air intake ventilation grill.

STANDARD FEATURES

1. Two removable stainless steel steps.
2. Pull down night cover.
3. Exterior & interior laminate finish: Black.
4. Stainless steel deck and perforated back.
5. Self contained condensing unit.
6. Laminated side gables.

OPTIONS

1. Plastic laminate exterior finish of choice.
2. Powder coated metal display riser and inlay pan.
3. Condensate evaporator pan.
4. Remote condensing unit.
5. Fluorescent light.

Operating temperature of 2° to 4° Celsius (37° to 40°F.) under normal store conditions of 24° Celsius (75°F.) with 50% relative humidity. Condensation on glass may occur under hot & humid conditions.

Product entering the display case must be 4° Celsius (40°F.) or lower.

*Due to constant improvements, specifications are subject to change without notice.



Canadian Display Systems Inc.

177 Westcreek Drive, Woodbridge, Ontario L4L 9N6
Ph: 905-265-7888, 1-800-895-5862 Fax: 905-265-7692
email [cgs1@on.aibn.com](mailto:cds1@on.aibn.com)

www.canadiandisplayssystems.com