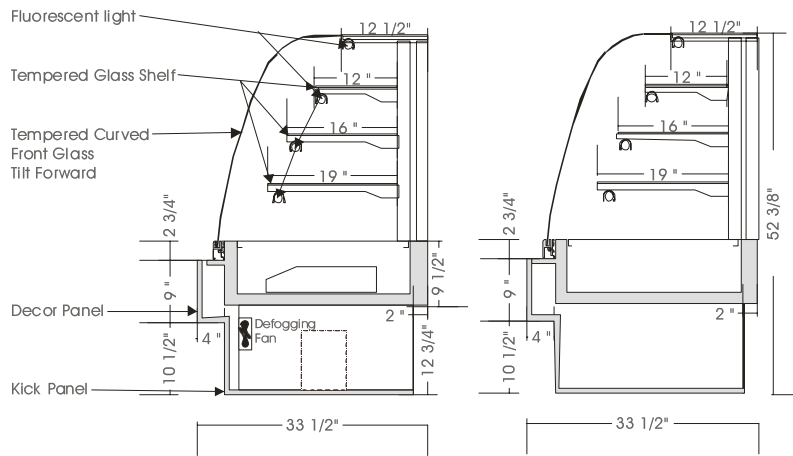


Infinity

REF./DRY DUAL CASE – GLASS ENDS – IRDG

MODELS: IRDG 5246, IRDG 5258, IRDG 5276, IRDG 5292



SPECIFICATIONS

MODEL	DIMENSIONS	COMPRESSOR	ELECTRICAL	SHIPPING WT.
IRDG 5246	46\"L.X33 1/2\"D.X52 3/8\"H.	1/3 H.P.	115V/1/60 HZ/ 9.0 AMP	550 lbs.
IRDG 5258	58\"L.X33 1/2\"D.X52 3/8\"H.	1/3 H.P.	115V/1/60 HZ/ 9.5 AMP	610 lbs.
IRDG 5276	76\"L.X33 1/2\"D.X52 3/8\"H.	1/3 H.P.	115V/1/60 HZ/10.0 AMP	740 lbs
IRDG 5292	92\"L.X33 1/2\"D.X52 3/8\"H.	1/2 H.P.	115V/1/60 HZ/12.0 AMP	860 lbs

STANDARD FEATURES

1. Top light and shelf lights.
2. Tempered curved front glass, tilt forward and removable.
3. Front glass defogging system.
4. Stainless steel interior.
5. Clear satin anodized aluminum hinge and framework.
6. Exterior & interior laminate finish: Black.
7. Self contained air cooled compressor w/ hot gas condensate evaporator pan.

OPTIONS

1. Plastic laminate exterior finish of choice.
2. Powder coated aluminum hinge and framework.
3. Custom units on request.
4. Remote condensing unit.
5. Mirrored sliding doors.
6. Laminate covered side gables.

Operating temperature of 2° to 4° Celsius (37° to 40° F.) under normal store conditions of 24° Celsius (75° F.) with 50% relative humidity.

Condensation on glass may occur under hot & humid conditions.

Product entering the display case must be 4° Celsius (40° F.) or lower.

*Due to constant improvements, specifications are subject to change without notice.



Canadian Display Systems Inc.

177 Westcreek Drive, Woodbridge, Ontario L4L 9N6
Ph: 905-265-7888, 1-800-895-5862 Fax: 905-265-7692

email cds1@on.aibn.com

www.canadiandisplayssystems.com