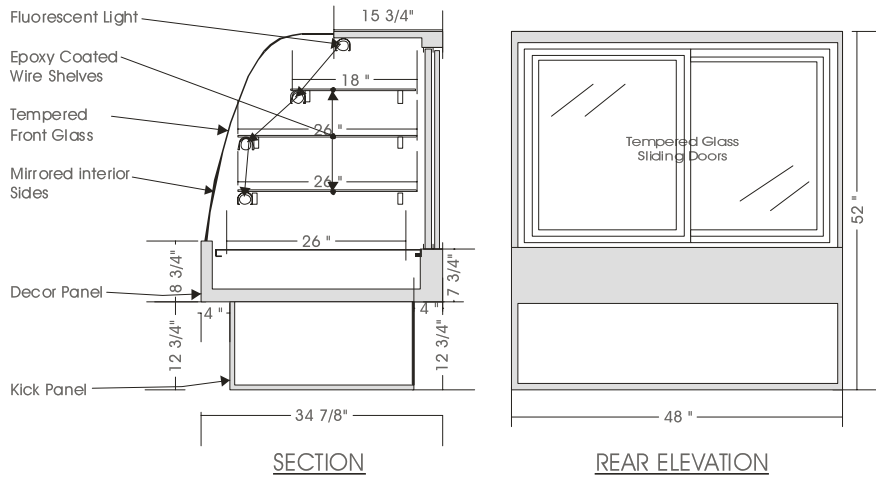


# Infinity

## DRY HIGH VOLUME MERCHANDISER – IDM

MODELS: IDM 5240, IDM 5248, IDM 5260, IDM 5278



### SPECIFICATIONS

MODEL	DIMENSIONS	ELECTRICAL	SHIP WT.	PAN CAPACITY
IDM 5240	40"L.X34 $\frac{7}{8}$ "D.X52"H.	115V/1/60HZ/1.5 AMP	300 lb.	6 - 18"X26", 3 - 12"X18"
IDM 5248	48"L.X34 $\frac{7}{8}$ "D.X52"H.	115V/1/60HZ/2.0 AMP	350 lb.	6 - 18"X26", 3 - 9"X26", 3 - 12"X18"
IDM 5260	60"L.X34 $\frac{7}{8}$ "D.X52"H.	115V/1/60HZ/2.5 AMP	420 lb.	11 - 18"X26"
IDM 5278	78"L.X34 $\frac{7}{8}$ "D.X52"H.	115V/1/60HZ/3.0 AMP	520 lb.	12 - 18"X26", 6 - 12"X18"

#### STANDARD FEATURES

1. Top light.
2. Shelf lights.
3. Fixed tempered curved front glass.
4. Solid sides w/mirrored interior.
5. Exterior & interior laminate finish: Black.

#### OPTIONS

1. Plastic laminate exterior finish of choice.
2. Custom units on request.
3. Tempered glass shelves.
4. Mirrored sliding doors.

\*Due to constant improvements, specifications are subject to change without notice.



## Canadian Display Systems Inc.

177 Westcreek Drive, Woodbridge, Ontario L4L 9N6  
Ph: 905-265-7888, 1-800-895-5862 Fax: 905-265-7692

email [cds1@on.aibn.com](mailto:cds1@on.aibn.com)

[www.canadiandisplayystems.com](http://www.canadiandisplayystems.com)