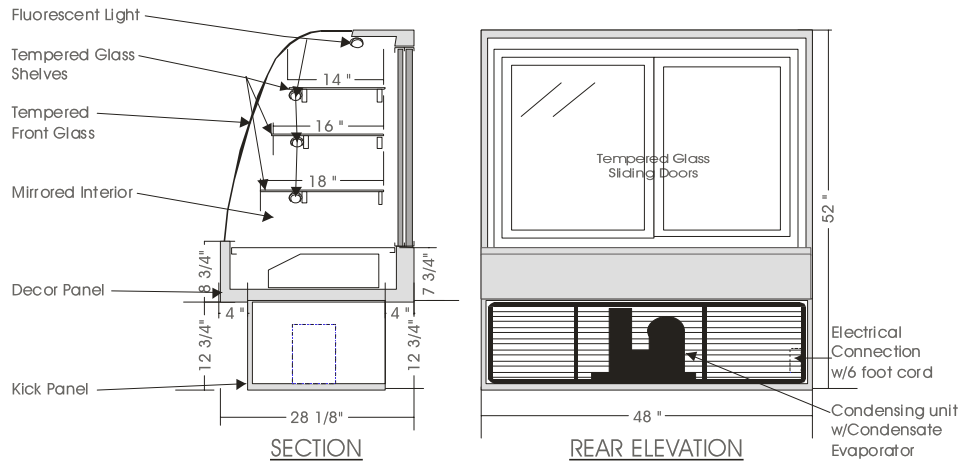


# Infinity

## REFRIGERATED CANDY – IRCM

MODELS: IRCM 5240, IRCM 5248, IRCM 5260, IRCM 5278



### SPECIFICATIONS

MODEL	DIMENSIONS	COMPRESSOR	ELECTRICAL	SHIPPING WT.
IRCM 5240	40"L.X28"D.X52"H.	¼ H.P.	115V/1/60 HZ/ 9.0 AMP	400 lb.
IRCM 5248	48"L.X28"D.X52"H.	¼ H.P.	115V/1/60 HZ/ 9.0 AMP	500 lb.
IRCM 5260	60"L.X28"D.X52"H.	¼ H.P.	115V/1/60 HZ/ 9.5 AMP	570 lb.
IRCM 5278	78"L.X28"D.X52"H.	⅓ H.P.	115V/1/60 HZ/10.0 AMP	760 lb.

#### STANDARD FEATURES

1. Top light.
2. Shelf lights.
3. Fixed tempered curved front glass, thermo pane.
4. Front glass defogging system.
5. Exterior & interior laminate finish: Black.
6. Self contained air cooled compressor w/ hot gas condensate evaporator pan.
7. Solid sides w/mirrored interior.

#### OPTIONS

1. Plastic laminate exterior finish of choice.
2. Mirrored sliding doors.
3. Tempered glass shelves.
4. Custom units on request.
5. Remote condensing unit.

Operating temperature of 15° to 18° Celsius (59° to 65° F.) under normal store conditions of 24° Celsius (75° F.) with 50% relative humidity. Condensate may occur under hot & humid conditions.

\*Due to constant improvements, specifications are subject to change without notice.



## Canadian Display Systems Inc.

177 Westcreek Drive, Woodbridge, Ontario L4L 9N6  
Ph: 905-265-7888, 1-800-895-5862 Fax: 905-265-7692

email [cds1@on.aibn.com](mailto:cds1@on.aibn.com)

[www.canadiandisplayystems.com](http://www.canadiandisplayystems.com)