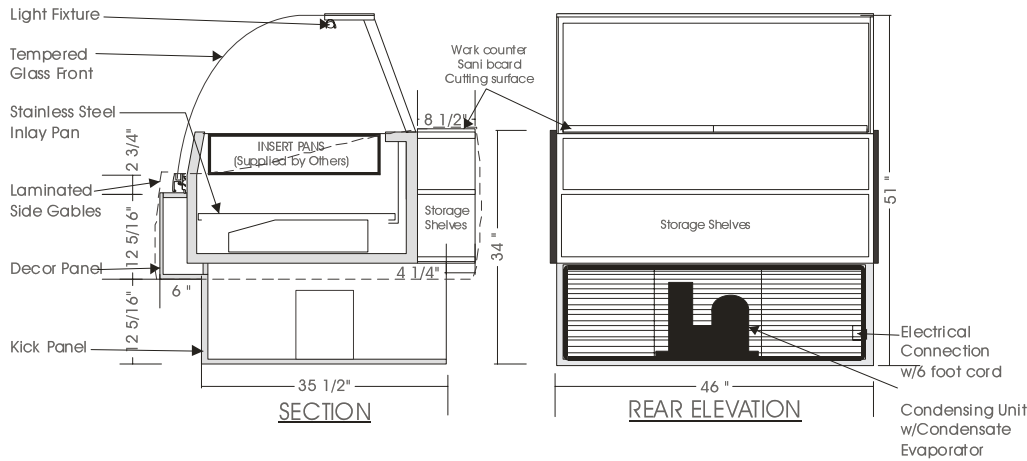


# Signature

## COLD FOOD TABLE – DLCD

MODELS: DLCD 5138, DLCD 5146, DLCD 5158, DLCD 5176, DLCD 5192



### SPECIFICATIONS

MODEL	DIMENSIONS	COMPRESSOR	ELECTRICAL	SHIPPING WT.
DLCD 5138	38"L.X45 $\frac{3}{4}$ "D.X51"H.	$\frac{1}{4}$ H.P.	115V/1/60 HZ/ 9.0 AMP	400 lb.
DLCD 5146	46"L.X45 $\frac{3}{4}$ "D.X51"H.	$\frac{1}{3}$ H.P.	115V/1/60 HZ/10.0 AMP	460 lb.
DLCD 5158	58"L.X45 $\frac{3}{4}$ "D.X51"H.	$\frac{1}{3}$ H.P.	115V/1/60 HZ/10.0 AMP	525 lb.
DLCD 5176	76"L.X45 $\frac{3}{4}$ "D.X51"H.	$\frac{1}{2}$ H.P.	115V/1/60 HZ/12.0 AMP	650 lb.
DLCD 5192	92"L.X45 $\frac{3}{4}$ "D.X51"H.	$\frac{1}{2}$ H.P.	115V/1/60 HZ/12.0 AMP	890 lb.

*Note: Add  $\frac{3}{4}$ " each side for side gables.*

#### STANDARD FEATURES

1. Top light.
2. Sani board work surface.
3. Tempered tilt forward glass front, removable.
4. Tempered side glass, removable.
5. Stainless steel interior.
6. Clear satin anodized aluminum hinge and framework.
7. Interior & exterior laminate finish: Black.
8. Self contained air cooled compressor w/hot gas condensate evaporator pan.
9. Laminate covered side gables.

#### OPTIONS

1. Plastic laminate exterior finish of choice.
2. Powder coated aluminum hinge and framework.
3. Custom anodized color hinge and framework.
4. Custom unit on request.
5. Additional glass shelves.
6. Remote condensing unit.

Operating temperature of 2° to 4° Celsius (37° to 40° F.) under normal store conditions of 24° Celsius (75° F.) with 50% relative humidity.

Condensation on glass may occur under hot & humid conditions.

Product entering the display case must be 4° Celsius (40° F.) or lower.

\*Due to constant improvements, specifications are subject to change without notice.



## Canadian Display Systems Inc.

177 Westcreek Drive, Woodbridge, Ontario L4L 9N6  
 Ph: 905-265-7888, 1-800-895-5862 Fax: 905-265-7692  
 email [cds1@on.aibn.com](mailto:cds1@on.aibn.com)  
[www.canadiandisplayssystem.com](http://www.canadiandisplayssystem.com)