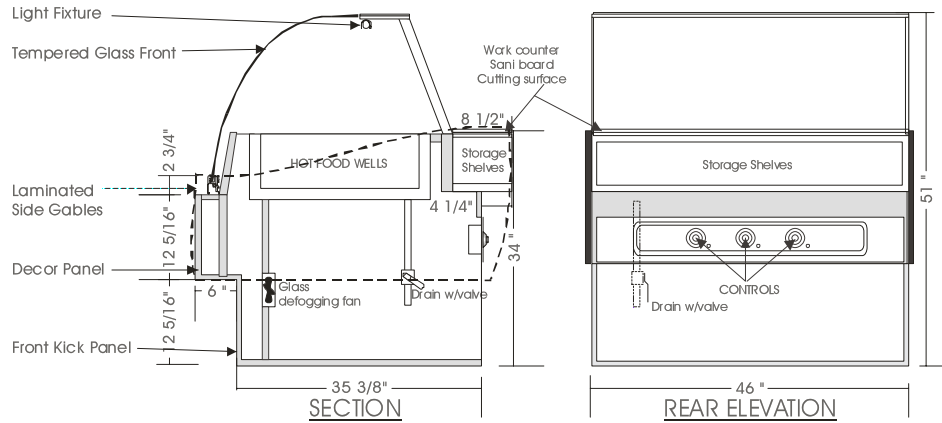


# Signature

## HOT FOOD TABLE – DLHD

MODELS: DLHD 5138, DLHD 5146, DLHD 5158, DLHD 5176, DLHD 5192



### SPECIFICATIONS

MODEL	DIMENSIONS	WELLS	ELECTRICAL (WELLS)	ELECTRICAL (LIGHT/FAN)	SHIPPING WT.
DLHD 5138	38"L.X45 $\frac{3}{4}$ "D.X51"H.	2 WELLS	208V/1/60HZ/11.9 Amp	115V/1/60HZ/1.5 Amp	360 lb.
DLHD 5146	46"L.X45 $\frac{3}{4}$ "D.X51"H.	3 WELLS	208V/1/60HZ/17.9 Amp	115V/1/60HZ/1.8 Amp	460 lb.
DLHD 5158	58"L.X45 $\frac{3}{4}$ "D.X51"H.	4 WELLS	208V/1/60HZ/23.8 Amp	115V/1/60HZ/2.0 Amp	530 lb.
DLHD 5176	76"L.X45 $\frac{3}{4}$ "D.X51"H.	5 WELLS	208V/1/60HZ/29.8 Amp	115V/1/60HZ/2.5 Amp	650 lb.
DLHD 5192	92"L.X45 $\frac{3}{4}$ "D.X51"H.	6 WELLS	208V/1/60HZ/35.8 Amp	115V/1/60HZ/3.0 Amp	890 lb.

*Note: Add  $\frac{3}{4}$ " each side for side gables.*

#### STANDARD FEATURES

1. Top light.
2. Sani board work surface.
3. Tempered tilt forward glass front, removable.
4. Tempered glass side, removable.
5. Stainless steel interior.
6. Clear satin anodized aluminum hinge and framework.
7. Exterior & interior laminate finish: Black.
8. Laminate covered side gables.

#### OPTIONS

1. Plastic laminate exterior finish of choice.
2. Powder coated aluminum hinge and framework.
3. Custom anodized colour hinge and framework.
4. Custom units on request.
5. Additional glass shelves w/lights.

\*Due to constant improvements, specifications are subject to change without notice.



## Canadian Display Systems Inc.

177 Westcreek Drive, Woodbridge, Ontario L4L 9N6  
 Ph: 905-265-7888, 1-800-895-5862 Fax: 905-265-7692  
 email [cds1@on.aibn.com](mailto:cds1@on.aibn.com)  
[www.canadiandisplayssystems.com](http://www.canadiandisplayssystems.com)